



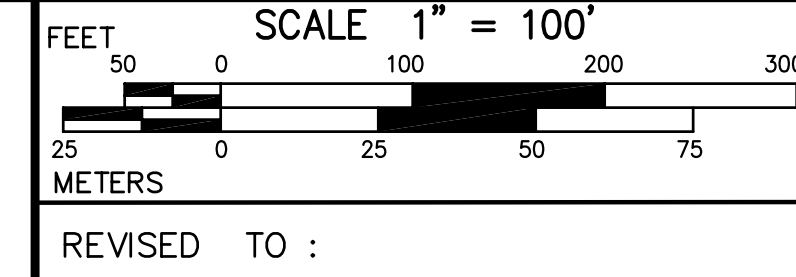
THIS MAP IS FOR ASSESSMENT PURPOSES. IT IS NOT VALID FOR LEGAL DESCRIPTION OR CONVEYANCE. THE HORIZONTAL DATUM IS THE MASSACHUSETTS COORDINATE SYSTEM, ISLAND ZONE, NAD 27. DIGITIZED IN 1998 BY CARTOGRAPHIC ASSOCIATES, INC., UNDER CONTRACT WITH: HORSLEY & WITTEN, INC., SEXTANT HILL, 90 ROUTE 6A, SANDWICH, MASSACHUSETTS 02563 ORIGINAL MAPPING: - PHOTOGRAMMETRIC COMPILATION - LOCKWOOD MAPPING, INC., ROCHESTER, NEW YORK. - PARCEL MAPPING - SCHOFIELD BROTHERS, INC., FRAMINGHAM AND VINEYARD HAVEN, MASSACHUSETTS.

REVISED AND REPRINTED BY
CARTOGRAPHIC ASSOC. INC.
PROFESSIONAL CONSULTANTS
MUNICIPAL MAPPING - GIS - PUBLIC WORKS INFORMATION MANAGEMENT
11 PLEASANT STREET, LITTLETON, NEW HAMPSHIRE 03561
(603)444-6768 - 1(800)322-4540 - FAX (603)444-1366 - WWW.CAI-INFO.COM

ASSESSORS PARCEL ID.	56
AREA	A
RECORD DIMENSION	100' or 100 S
EXEMPT PROPERTY.	ⓔ
BUILDING/STRUCTURE	🏠

LEGEND

SUBDIVISION LOT NO.	②
RIGHT OF WAY/ACCESS.	87'W
COMMON OWNERSHIP	OR
SURFACE WATER PROPERTYLINE	
SURFACE WATER NOT A PROPERTYLINE	
WETLANDS.	🌿



ASSESSORS MAPS
OAK BLUFFS
MASSACHUSETTS

INDEX

14	15	16	17	18	19	20
21	22	23	24	25	26	27
28	29	30	31	32	33	34
35	36	37	38	39	40	41
42	43	44	45	46	47	48
49	50	51	52	53	54	55
56	57	58	59	60	61	62

MAP NO.
56