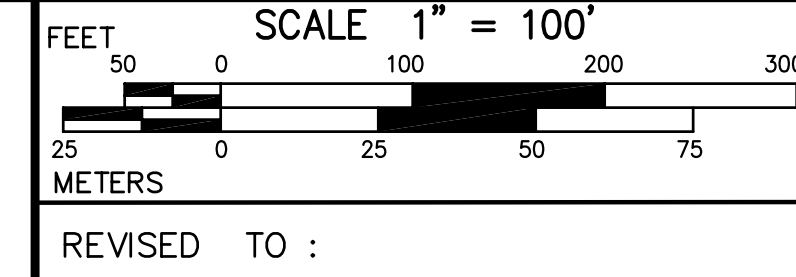




THIS MAP IS FOR ASSESSMENT PURPOSES. IT IS NOT VALID FOR LEGAL DESCRIPTION OR CONVEYANCE. THE HORIZONTAL DATUM IS THE MASSACHUSETTS COORDINATE SYSTEM, ISLAND ZONE, NAD 27. DIGITIZED IN 1998 BY CARTOGRAPHIC ASSOCIATES, INC., UNDER CONTRACT WITH: HORSLEY & WITTEN, INC., SEXTANT HILL, 90 ROUTE 6A, SANDWICH, MASSACHUSETTS 02563 ORIGINAL MAPPING:
- PHOTOGRAMMETRIC COMPILATION - LOCKWOOD MAPPING, INC., ROCHESTER, NEW YORK.
- PARCEL MAPPING - SCHOFIELD BROTHERS, INC., FRAMINGHAM AND VINEYARD HAVEN, MASSACHUSETTS.

REVISED AND REPRINTED BY
CARTOGRAPHIC ASSOC. INC.
PROFESSIONAL CONSULTANTS
MUNICIPAL MAPPING - GIS - PUBLIC WORKS INFORMATION MANAGEMENT
11 PLEASANT STREET, LITTLETON, NEW HAMPSHIRE 03561
(603)444-6768 - 1(800)322-4540 - FAX (603)444-1366 - WWW.CAI-INFO.COM

ASSESSORS PARCEL ID.		56	LEGEND		SUBDIVISION LOT NO.
AREA	100' or 100	A	RIGHT OF WAY/ACCESS.	8' W	
RECORD DIMENSION	100 S		COMMON OWNERSHIP	OR	
SCALED DIMENSION	100 S		SURFACE WATER PROPERTYLINE		
EXEMPT PROPERTY			SURFACE WATER NOT A PROPERTYLINE		
BUILDING/STRUCTURE			WETLANDS		



ASSESSORS MAPS
OAK BLUFFS
MASSACHUSETTS

INDEX									
14	15	16	17	18	19	20	21	22	23
24	25	26	27	28	29	30	31	32	33
34	35	36	37	38	39	40	41	42	43
44	45	46	47	48	49	50	51	52	53
54	55	56	57	58	59	60	61	62	63

MAP NO.
52